



**LARSSON ELEVATOR MÉXICO S.A. DE C.V.**

Lateral Periférico de la Juventud #2816-B  
Col. Ignacio Rodríguez, C.P. 31123  
Chihuahua, Chihuahua. México

✉ [ventas@larssonelevators.com](mailto:ventas@larssonelevators.com)

☎ +52 800 890 6557

🌐 [www.larssonelevators.com](http://www.larssonelevators.com)

📘 @LarssonMéxico

📷 @Larssoncuu



**LARSSON**

**LARSSON**

**Observation Elevator / Hospital Elevator**

# OBSERVATION ELEVATOR

LARSSON observation series products fuse German modern aesthetics, advanced technology and art concept. Make it better from appearance design and internal performance, and to be preferred vertical transportation solution for widely use of shopping mall, hotels, tourist center and other sightseeing places.

## › **Beauty—artistic treasures**

If architecture is the city fairy, LARSSON observation elevator will be a dazzling pearl above the city. Whether in sunny afternoon or evening falls, the elegant LARSSON observation elevator will let you eyebrows.

Up and down alternately, light flows, it's so different, so unusual.

## › **Leisure—noble style**

When you touch hall buttons softly, you will feel the passion and charm from LARSSON observation elevator. Enjoy VIP treatment and bring good mood between up and down.

## › **Comfort—mind vision**

Full transparent car, enjoy horizon with unlimited, have a commanding view of beauty.

Superexcellent height and angle of observation, let you hold a panoramic view without looking for it.

Looking up at clouds scud across with comfort and pleasure.

Dazzling pearl above the city, Up and down  
Alternately, light flows, it's so different, so unusual



# ADVANCED TECHNOLOGY



## » Gearless permanent magnet synchronous traction machine

Compared with traditional drive elevator, the elevator with gearless permanent magnet synchronous traction machine takes more advantage of energy-saving. It saves more than 30% energy efficiently and to realize a real low-carbon energy carriers.

### Unexampled advantage

Save energy: save 50% operating efficiency compared with traditional geared system.

Save space: reduce construction cost by small size and light-weight. Green and environmental protection: dispense with lubricating system, without oil leaking and electromagnetism pollution.

Quiet and durable: vibration-free, no noise, and motor noise is not more than 51 dB

Safe, rest assured: professional design of brake ensures reliable parking in any case.



## » Advanced technology brings you visual feast

### Integration control system

We adopt a new generation of intelligent vector integration control system to combine elevator control with drive, to take powerful advantages of compact structure, exquisite shape, simple operation and convenient maintenance.

### Advanced door-motor system

We adopt new-style VVVF door-motor system to adjust output torque automatically and optimize speed curve of door switch, to realize stable running of doors and quiet switches.

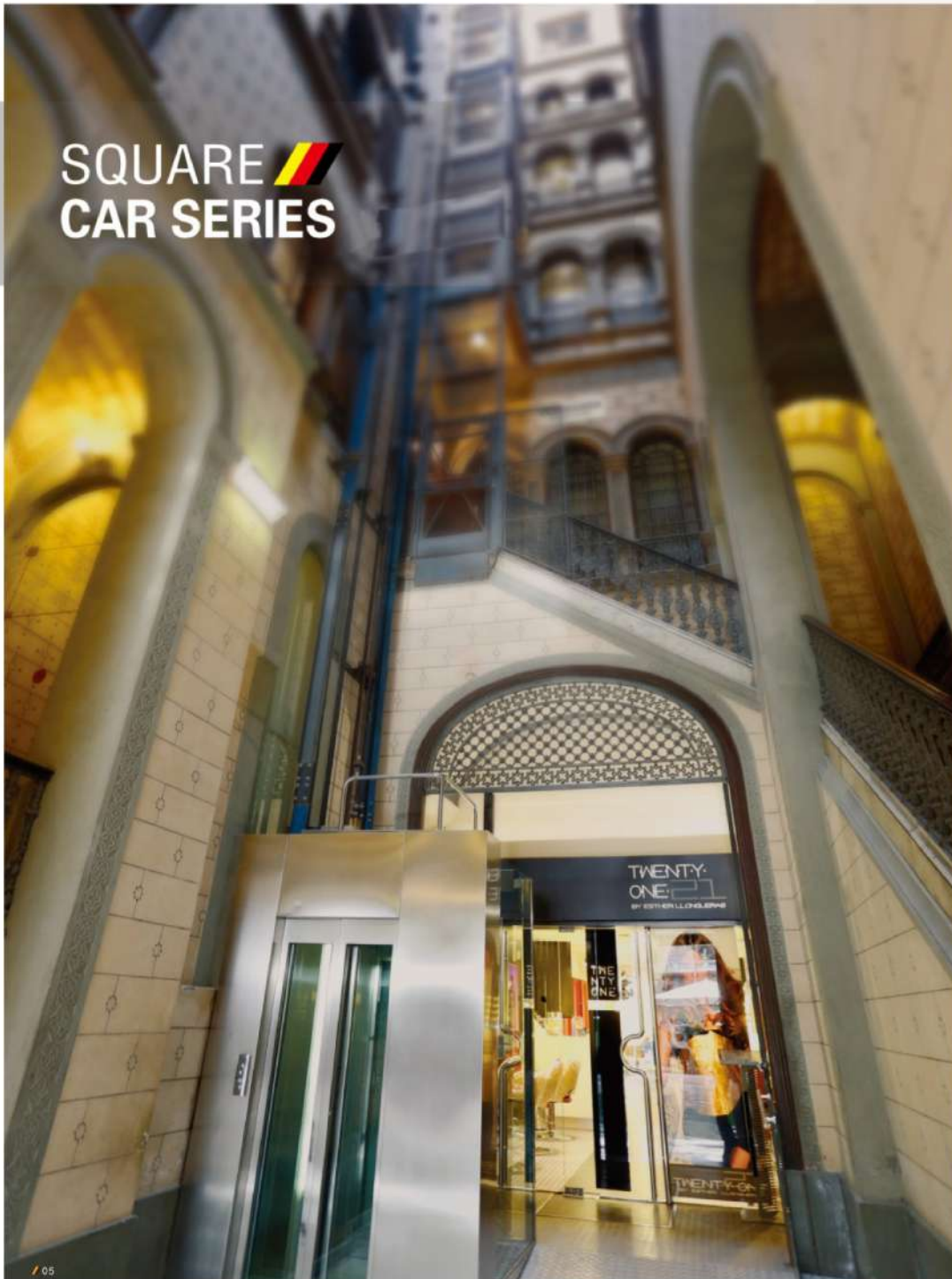
By using light curtain door protective device to detect people in-plane, make sensitive response for good care of sightseers.

By using door-motor detection sensor to detect whether people in or out for guarantee your safe trip.

### Voice announcement system

By using microcomputer synthesized voice signals, worm voice prompt, this system could play elevator running direction, arrival landing and emergency automatically and offer humanized environment.

# SQUARE CAR SERIES



## » DC001

- Car cover:** Steel paint, decorative lighting
- Observation car wall:** 6+6 doubling safety glass (3 pieces)
- Decoration roof:** Steel paint, acrylic arched roof, down light
- Car wall:** Hairline stainless steel
- Handrail:** Stainless steel single pipe
- Floor:** PVC

Note: Pictures have been drawn by computer. It might be slightly different from actual colors. Please take real product as criterion.



# SQUARE CAR SERIES



## ➤ DC002

**Car cover:** Steel paint, decorative lighting  
**Observation car wall:** 6+6 doubling safety glass (3 pieces)  
**Decoration roof:** Steel paint, acrylic lighting  
**Car wall:** 6+6 doubling safety glass  
**Handrail:** Stainless steel single pipe  
**Floor:** PVC



## ➤ DC003

**Car cover:** Steel paint, spotlight  
**Observation car wall:** 6+6 doubling safety glass (3 pieces)  
**Decoration roof:** Steel paint, acrylic arched roof, down light  
**Car wall:** Hairline stainless steel  
**Handrail:** Stainless steel single pipe  
**Floor:** PVC

Note: Pictures have been drawn by computer. It might be slightly different from actual colors. Please take real product as criterion.

# CIRCULAR

## CAR SERIES



### » DC101

**Car cover:** Steel paint and stainless steel coaming, decorative light  
**Observation car wall:** Circular 6+6 doubling safety glass (3 pieces)  
**Decoration roof:** Steel paint, acrylic lighting, down light  
**Car wall:** Hairline stainless steel  
**Handrail:** Stainless steel single pipe  
**Floor:** PVC



### » DC102

**Car cover:** Steel paint, acrylic lighting  
**Observation car wall:** Circular 6+6 doubling safety glass (3 pieces)  
**Decoration roof:** Steel paint, circular glass shape, down light  
**Car wall:** Hairline stainless steel  
**Handrail:** Stainless steel single pipe  
**Floor:** PVC



### » DC103

**Car cover:** Steel paint, decorative lighting  
**Observation car wall:** Circular 6+6 doubling safety glass (3 pieces)  
**Decoration roof:** Steel paint, acrylic roof, down light  
**Car wall:** Hairline stainless steel  
**Handrail:** Stainless steel single pipe  
**Floor:** PVC

Note: Pictures have been drawn by computer. It might be slightly different from actual colors. Please take real product as criterion.

# CAR/HALL SIGNAL DEVICE



COP001A



COP001B

Black and yellow word break code, liquid-crystal display (optional)



COP001C

Black and white word break code, liquid-crystal display (optional)  
Standard button B001C



COP002A



COP002B

Black and yellow word break code, liquid-crystal display (optional)



COP002C

Black and white word break code, liquid-crystal display (optional)  
Standard button B001C

COP001A Standard configuration

COP002A

## Material quality

Black plastic frame, hairline stainless steel panel

Aluminum frame, original hairline stainless steel panel

## Display

Orange dot matrix display (Optional: COP001B black and yellow word break code, liquid-crystal display, COP001C black and white word break code, liquid-crystal display)

Orange dot matrix display (Optional: COP002B black and yellow word break code, liquid-crystal display, COP002C black and white word break code, liquid-crystal display)

## Button

B001A (More options on the button page)

B001A (More options on the button page)

## Optional display



Black and yellow word break code, liquid-crystal display (optional)



Black and white word break code, liquid-crystal display (optional)

**Material quality:** Black frame, hairline stainless steel panel

**Display:** Orange dot matrix display (Optional: HB001B black and yellow word break code, liquid-crystal display, HB001C black and white word break code, liquid-crystal display, standard button B001C)

**Button:** B001A (More options on the button page)

HB001A Standard configuration



**Material quality:** White frame, black organic glass panel

**Display:** Orange dot matrix display (Optional: HB002B black and yellow word break code, liquid-crystal display, HB002C black and white word break code, liquid-crystal display, standard button B001C)

**Button:** B001A (More options on the button page)

HB002A



**Material quality:** Aluminum frame, original hairline stainless steel panel

**Display:** Orange dot matrix display (Optional: HB005B black and yellow word break code, liquid-crystal display, HB005C black and white word break code, liquid-crystal display)

**Button:** B001A (More options on the button page)

HB005A



**Material quality:** Aluminum frame, original hairline stainless steel panel

**Button:** B001A (More options on the button page)

HB006







# CAR/HALL SIGNAL DEVICE

**Material quality:** Black frame, stainless steel panel

**Display:** Orange dot matrix display (Optional: HB101B black and yellow word break code, liquid-crystal display, HB101C black and white word break code, liquid-crystal display, standard button B001C)

**Button:** B001A (More options on the button page)



HB101A ▶

**Material quality:** White frame, black organic glass panel

**Display:** Orange dot matrix display (Optional: HB102B black and yellow word break code, liquid-crystal display, HB102C black and white word break code, liquid-crystal display, standard button B001C)

**Button:** B001A (More options on the button page)



HB102A ▶

**Material quality:** Aluminum frame, original hairline stainless steel panel

**Display:** Orange dot matrix display (Optional: HB105B black and yellow word break code, liquid-crystal display, HB105C black and white word break code, liquid-crystal display, standard button B001C)

**Button:** touch button



HB105A ▶

## ▶ SPRAYING COLOR



P001 Milky-white



P002 Camel gray



P003 Ivory tint



P004 Aircraft gray

Note: As limitation of printing, the color in this brochure is only for reference. Please refer to the respective technical documents, when choosing the color in the official order.



# ARRIVAL LIGHT BUTTON

▶ Button light (3 color optional)  
● orange ● blue ○ white



**HL001A**  
Orange light  
**HL001B**  
Blue light  
**HL001C**  
White light



**HL002A**  
Orange light  
**HL002B**  
Blue light  
**HL002C**  
White light



**HL003A**  
Orange light  
**HL003B**  
Blue light  
**HL003C**  
White light



**HL004A**  
Orange light  
**HL004B**  
Blue light  
**HL004C**  
White light



**HL005A**  
Orange light  
**HL005B**  
Blue light  
**HL005C**  
White light



**HL006A**  
Orange light  
**HL006B**  
Blue light  
**HL006C**  
White light

Button light (3 color optional)  
● orange ● blue ○ white



**B001A**  
Without braille, orange light  
**B001B**  
Without braille, blue light  
**B001C**  
Without braille, white light

**B101A**  
With braille, orange light  
**B101B**  
With braille, blue light  
**B101C**  
With braille, white light



**B002A**  
Without braille, orange light  
**B002B**  
Without braille, blue light  
**B002C**  
Without braille, white light

**B102A**  
With braille, orange light  
**B102B**  
With braille, blue light  
**B102C**  
With braille, white light



**B004A**  
Without braille, orange light  
**B004B**  
Without braille, blue light  
**B004C**  
Without braille, white light

**B104A**  
With braille, orange light  
**B104B**  
With braille, blue light  
**B104C**  
With braille, white light



**B005A**  
Without braille, orange light  
**B005B**  
Without braille, blue light  
**B005C**  
Without braille, white light

**B105A**  
With braille, orange light  
**B105B**  
With braille, blue light  
**B105C**  
With braille, white light

## ▶ DOOR PLANK



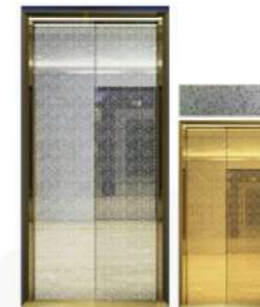
**LD101**  
Door plank: Mirror etched



**LD102**  
Door plank: Mirror etched

**LD201**  
Door plank: Titanium mirror etched

**LD202**  
Door plank: Titanium mirror etched



**LD103**  
Door plank: Mirror etched



**LD104**  
Door plank: Mirror etched

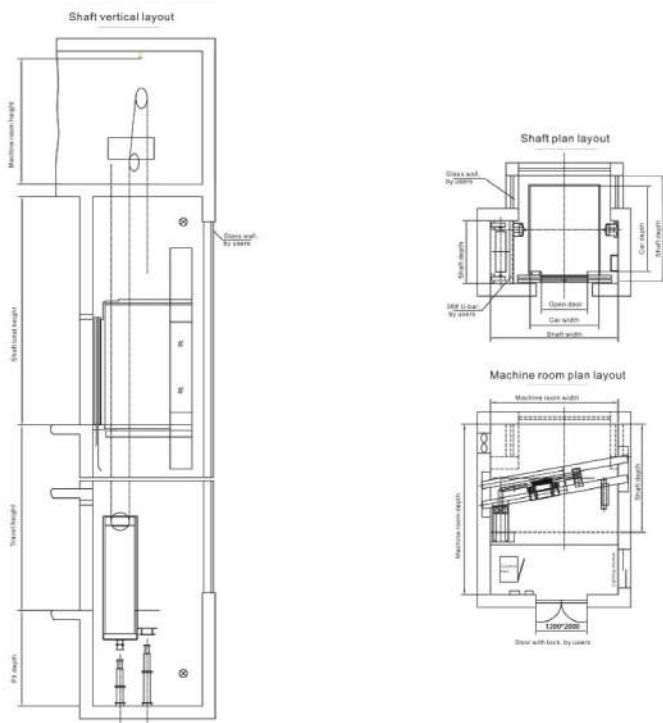
**LD203**  
Door plank: Titanium mirror etched

**LD204**  
Door plank: Titanium mirror etched

Note: Pictures have been drawn by computer. It might be slightly different from actual colors.  
Please take real product as criterion.

# SQUARE OBSERVATION ELEVATOR

Layout specifications  
and dimensions



## Specification parameter of square observation elevator

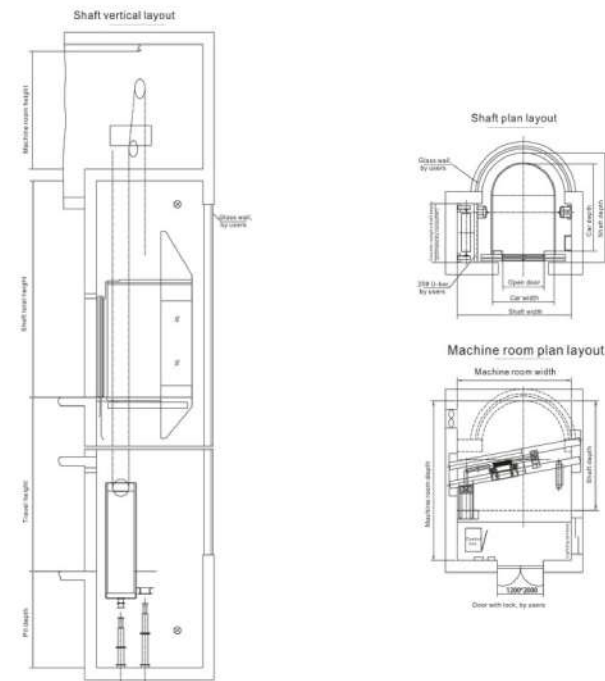
Note: Standard first floor height 4m,  
other floors height 3m.

KG Capacity	m/s Speed	Car dimension mm			Door opening dimension mm			Hoistway dimension mm			Highest landing	Highest rise height m	MRW mm Machine room net width	MRD mm Machine room net depth	MRH mm Machine room net height
		CW Width	CD Depth	CH Height	OP Width	OPH Height	HW Width	HD Depth	K Overhead	S Pit depth					
800	1	1250	1500	2500	800	2100	2400	1950	4500	1800	15	50	2400	3400	2500
	1.5										24	80			
	1.75										32	95			
1000	1	1350	1700	2500	900	2100	2500	2150	4500	1800	15	50	2500	3700	2500
	1.5										24	80			
	1.75										32	95			
1150	1	1400	1800	2500	900	2100	2550	2250	4500	1800	15	50	2550	3700	2500
	1.5										24	80			
	1.75										32	95			
1350	1	1600	1800	2500	900	2100	2750	2250	4500	1800	15	50	2750	3700	2500
	1.5										24	80			
	1.75										32	95			
1600	1	1600	2100	2500	900	2100	2750	2550	4500	1800	15	50	2750	4000	2500
	1.5										24	80			
	1.75										32	95			

Note: The drawings and specifications shown on sample are only for your reference, any order please confirm with LARSSON company.

# CIRCULAR OBSERVATION ELEVATOR

Layout specifications  
and dimensions



## Specification parameter of square observation elevator

Note: Standard first floor height 4m,  
other floors height 3m.

KG Capacity	m/s Speed	Car dimension mm			Door opening dimension mm			Hoistway dimension mm			Highest landing	Highest rise height m	MRW mm Machine room net width	MRD mm Machine room net depth	MRH mm Machine room net height
		CW Width	CD Depth	CH Height	OP Width	OPH Height	HW Width	HD Depth	K Overhead	S Pit depth					
800	1	1250	1600	2400	800	2100	2400	2080	4500	1950	15	50	2400	3400	2500
	1.5										24	80			
	1.75										32	95			
1000	1	1350	1850	2400	900	2100	2500	2330	4500	1950	15	50	2500	3700	2500
	1.5										24	80			
	1.75										32	95			
1150	1	1400	1950	2400	900	2100	2550	2430	4500	1950	15	50	2550	3700	2500
	1.5										24	80			
	1.75										32	95			
1350	1	1600	1950	2400	900	2100	2750	2430	4500	1950	15	50	2750	3700	2500
	1.5										24	80			
	1.75										32	95			
1600	1	1600	2250	2400	900	2100	2750	2730	4500	1950	15	50	2750	4000	2500
	1.5										24	80			
	1.75										32	95			

Note: Considering the particularity of semicircular observation elevator shaft, there's required overall dimension of shaft in the table.  
Specific dimension please refer to our company construction layout drawing.

Note: The drawings and specifications shown on sample are only for your reference, any order please confirm with LARSSON company.





**Humanized carriers, the way of green and hope**  
**We provide safe medical passenger flow solution for you**

## HOSPITAL ELEVATOR

In view of daily work that hospitals are facing, LARSSON specially designs efficient smooth, safe and reliable hospital elevator series products to improve hospital transport efficiency significantly, and coordinate with rescue work for fighting for more hope.

### » Love design, deep care

Combining the elevator experience from both doctors and patients, LARSSON hospital elevator specially designs big handrail, braille button and mirror in car for the disabled and bed car, and brings convenience for more passengers.

### » High-efficient carriers, perfect medical space

According to occupant comfort, we adopt accurate door-motor control technology to regulate speed in real time, to realize zero to zero precision of leveling and to ensure that people and bed could easily get in and out of the elevator.

We adopt 64-bit full computer control system to optimize route of elevator, shorten waiting time of medical workers, patient and their relatives, and coordinate with the needs of medical environment efficiently.

### » Warm environment, healthy and green way

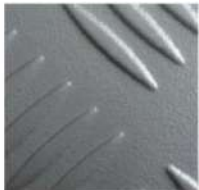
By using soft decorated car material to create warm and comfortable environment for passengers.

By using antiseptic device with positive and negative ion group to powerfully decompose the harmful substances in the air, purify environment in car and increase comfort.

# ELEVATOR DECORATION



## » PVC floor



FR109  
Standard configuration



FR110



FR112



FR113

## » Handrail



HR001

HR002

HR003

HR004

HR005

HR006

HR007

## » Ceiling style



CL001

Hairline stainless steel frame, acrylic lighting



CL 002

Hairline stainless steel frame, acrylic lighting



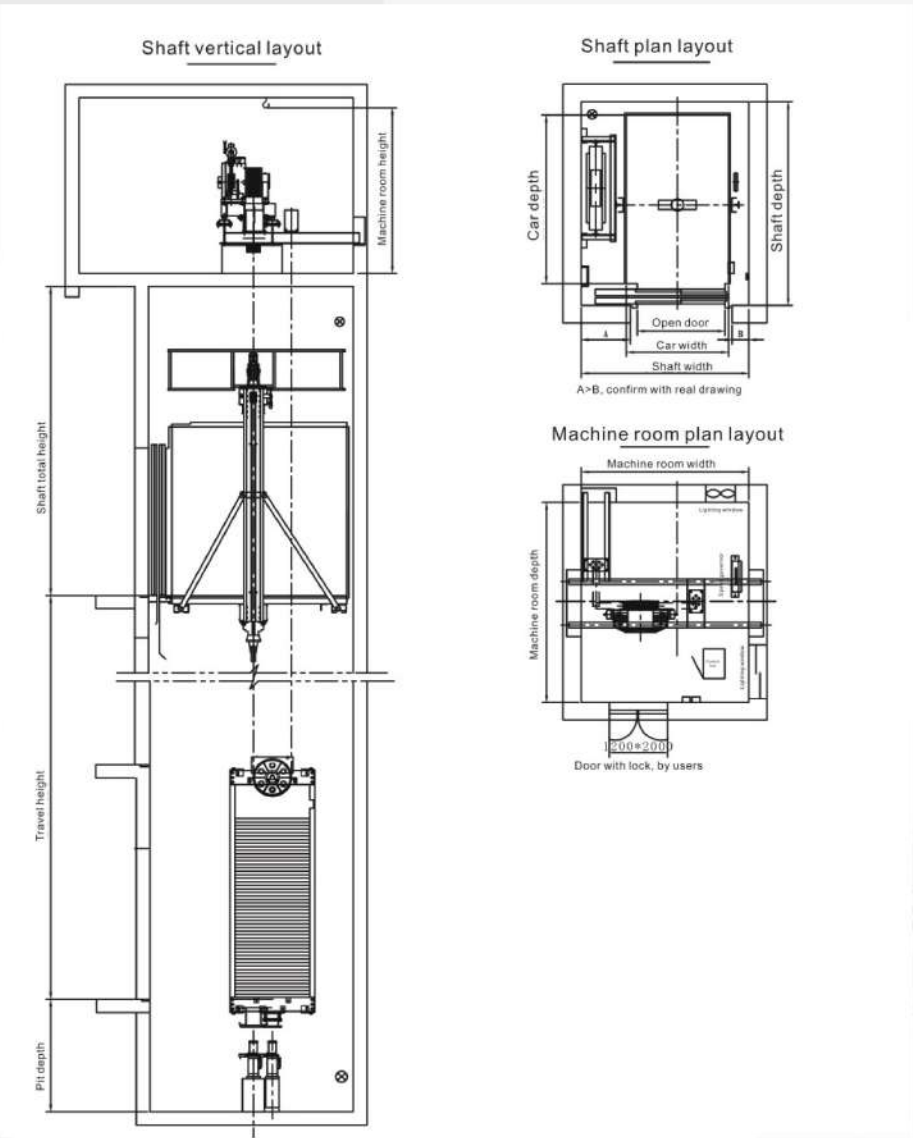
CL 003

Spraying steel frame, down light

Note: Pictures have been drawn by computer. It might be slightly different from actual colors. Please take real product as criterion.



# HOSPITAL ELEVATOR



## Specification parameter of hospital elevator

Note: Standard first floor height 4m, other floors height 3m.

KG Capacity	m/s Speed	Car dimension mm			Door opening dimension mm		Hoistway dimension mm			
		CW Width	CD Depth	CH Height	OP Width	OPH Height	HW Width	HD Depth	K Overhead	S Pit depth
1600	1	1400	2400	2500	1200	2100	2300	2850	4400	1550
	1.5								4500	1600
	1.75								4600	1650

KG Capacity	m/s Speed	Highest landing	Highest rise height m	MRW mm Machine room net width	MRD mm Machine room net depth	MRH mm Machine room net height
1600	1	15	50	2300	2850	2500
	1.5	24	80			
	1.75	32	95			

Note: The drawings and specifications shown on sample are only for your reference, any order please confirm with LARSSON company.

# SQUARE CAR SERIES



## General Protection

Closing time protection	Protection against reverse travel
Emergency fire operation (EFO)	Prevent slipping protection
Emergency lighting in the car	Safety circuit protection
Overload warning (Caution light and buzzer)	Limit protection
The screen door protection device	Upper and lower limit protection device
Car roof and control cabinet emergency electric operation	Door interlock protection
Fault automatic diagnosis	Operation contactor protection
Alarm bell	Brake detection and protection
Hitting the bottom buffer device	Manual brake release rescue
Outside door zone without opening door	Machine room door switch
Wave detection of grid voltage	Driven equipment overheating protection (OHT)
Contactors feedback detection	Fire signal feedback
Relay detection protection	Power-off emergency leveling <input type="radio"/>
Speed feedback detection	Emergency power supply device operation <input type="radio"/>
Fault low-speed self-rescue	Firefighters service (in car) <input type="radio"/>
HB button embedded self-diagnosis	



## Information Display

Hall and car digital position indicator	Running number display
Hall and car call/register	Floor display character arbitrary setting
Hall and car running direction display	



## Steady Running

Return to base station without call	End station for speed and floor number correction
Full collective control	Parking
Independent service	Two parallel
Full-load direct running (LNS)	Door opening re-leveling <input type="radio"/>
Automatic door switch	(Standard configuration for hospital)
Pre-torque output	Advance door opening <input type="radio"/>
Upon elevator floor setting	Group control operation management <input type="radio"/>
Hoistway self-learning	Double-door elevator <input type="radio"/>



## Comfortable Ride

Hall and car door setting time	Manually selected floor
Open and close button	Cancellation of wrong landing
Automatic ventilation and lighting of automatic control in car	Anti- nuisance operating
Automatic cancellation of reverse order	Car arrival gong
HB calls door opening	Attendant control <input type="radio"/>
Repeated closing door	Voice announcement <input type="radio"/>
Bypassed stop setting	Liquid display <input type="radio"/>
Input port evaluation	



## Security Monitoring

Intercom from monitor room to machine room, car (Exclude machine room wired to monitor room)	Card reader <input type="radio"/>
CCTV cable (From car to machine room) <input type="radio"/>	BA interface (Dry contact) <input type="radio"/>
Elevator remote control	Community monitoring panel <input type="radio"/>
	Community computer monitoring <input type="radio"/>

Note: O is optional function

